



Seaham Harbour Nursery School

Nursery Newsletter – January 2026

Dear Parents,

A belated Happy New Year to you all, we hope you had a wonderful Christmas and we wish you all the best for the coming year.

Thank you to all who have added some stories/photographs to your child's learning journal. If you haven't please could you add something, it would be lovely to have these memories in your child's special journal.



Hello and welcome to the new children and their families who have moved into main nursery from our Early Learners, we hope you have a wonderful time as you continue on your learning journey with us.

Our learning theme this half term is "People Who Help Us", the children will be finding out about different roles in the community. They will enjoy dressing up in a range of costumes, listening to stories and engaging in a variety of themed activities. If you know of anyone who works in the community (eg Dentist, Fire Fighter, Nurse, Police Officer, Pharmacist etc) and they would like to come in and talk to the children about their job, please see Mrs Scott or Mrs Wilson to organise this. Thank you.

Core Books, Core Rhymes & Songs

Our core books this half term are "Jasper's Beanstalk", "Jack and the Beanstalk" and "The Tiger Who Came to Tea".

We have attached our second core rhyme booklet for you to use at home with your children. The rhymes and songs we are focusing on this half term are "Pat-a-cake", "Humpty Dumpty", "Show me you're clapping", "Old McDonald", "5 Eggs", "5 Little Ducks", "5 Speckled Frogs" and "Peter Hammers".



Beat Baby likes to go places, make things, go on adventures, have a sleep over and go out and about. Please remember your child can borrow 'Beat Baby' to take home overnight or on a weekend, or to go on holiday. All we ask is you return 'Beat Baby' along with some notes or photographs of what 'Beat Baby' has done with your child, or upload photographs to your child's learning journal.

Week Beginning 16th February – Chinese New Year

To develop the children's understanding and knowledge of different activities we are celebrating Chinese New Year. The children will have opportunities to dress in traditional Chinese costumes, make masks and dragons, learn a dragon dance and eat real Chinese food.





Saturday 14th February 10am-12noon – Open Day

We are holding an Open Day for parent/carers and children to come along and meet the staff and have a look around our wonderful nursery buildings and gardens, if you know someone who would like to visit us please pass on this information. (**No need to book**). Remember, we are the **ONLY** nursery school in Seaham.

Seaham Harbour Nursery School



OUTSTANDING Ofsted
2006, 2009, 2012, 2015, 2019, 2024

Open Day

Saturday 14th February

10 am-12 noon



"Seaham Harbour Nursery School is a lovely place for a child to be.
All educational establishments should be like this"...Ofsted.

www.seahamharbour.durham.sch.uk

We offer:

- ♦ FREE "Play and Learn" places (15hrs) for 2 year olds (8.45-11.45 or 12.30-3.30)
- ♦ FREE "Childcare for Working Parents" 15/30 hour places for 2 year olds
- ♦ Paying 2 year old sessions £22.50 per session 3 hours (minimum 2 sessions per week)
- ♦ FREE 15 hour education places for 3&4 year olds (8.45-11.45 or 12.30-3.30)
- ♦ FREE "Childcare for Working Parents" for 3 & 4 year olds (30 hour places)
- ♦ Additional Early Drop Off for 2, 3 and 4 year olds (8.00-8.45 £3 per day)
- ♦ Additional paying sessions for 3&4 year olds

Why not contact us to register your child or to arrange a visit?

We look forward to welcoming you to our OPEN DAY (No need to book)

Saturday 14th February 2026 10 am—12 noon

Email: seahamharbournursery@durhamlearning.net

Tel: 0191 5812829

The **ONLY** Nursery School in Seaham



Week beginning 9th February – Parent Reviews

Mrs Wilson will be holding telephone appointments during this week. Further details about making appointments will follow.

Social Media/Networking Sites

As we all know social networking sites such as Facebook and Twitter are now widely used. This type of media allows people to communicate in ways that were not previously possible. However, such sites can be inappropriately used by some as a means of expressing negative or offensive views about schools and their staff.

Although social networking sites may appear to be the quickest and easiest way to express frustrations or concerns about a school and those associated with it, it is rarely appropriate to do so. Other ways, such as a private and confidential discussion with the school, or using the school's formal complaints process are much better suited to this.

The school considers the following examples to be inappropriate uses of social networking sites. (This list is non-exhaustive and intended to provide examples only)

- Making allegations about staff or pupils at the school
- Making complaints about the school or staff at the school
- Making defamatory statements about the school or staff at the school
- Posting negative/offensive comments about specific pupils/staff at the school
- Posting racist comments
- Posting comments which threaten violence

Please can we ask for your cooperation in following these guidelines when using social media/networking sites.

Website - Please keep checking this out for information, dates of events & photographs www.seahamharbour.durham.sch.uk

Class Dojo - As you know we use Class Dojo as a platform to share with you work/activities/events children have been doing sat nursery.

Please can we remind you **NOT** to use Class Dojo to send messages to staff, report absences, make enquiries, ask questions etc as Class Dojo is not accessed all the time by staff, we ask you to telephone or email as these are accessed all the time and responses can be given straight away.

Reconfirmation of codes for working families - Please can we ask you to reconfirm your eligibility code for Working Parents (both 15 hours and 30 hours) and **email Mrs Marshall** with the details of your new reconfirmation date, (your code will remain the same, but the date will change). If you do not do this in the allotted time requested when you receive your reminder email, then your child will not be able to attend for their sessions.

Dress for the Weather – Please can we ask children are dressed appropriately (ie coats, scarves, gloves and hats) for the cold weather and that the children have **their names** in all their coats, hats, scarves and gloves. We cannot take responsibility for unnamed items as it is impossible to match unnamed items to children.





Inclement Weather – in the event of inclement weather please check the school's website www.seahamharbour.durham.sch.uk, and the school facebook page [Seaham Harbour Nursery School](#) as well as local radio stations for guidance on school closures.



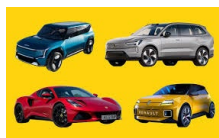
Starting Primary School – LAST REMINDER

Have you remembered to apply for a place for your child to start school in September? The closing date was January 15th 2026 and applications must have been made on line by visiting www.durham.gov.uk/primaryschoolplaces.

If you have not done this please see Mrs Scott straight away. Without an application form completed your children will not be able to start school in September.



Early Drop Off - This is available every morning from 8.00, at a charge of £3.00 per day. Children can come for odd days or on a regular basis, as long as they are booked in and paid for in advance. For further information, please contact Mrs Marshall in the school office.



Car Park - For Health and Safety reasons please can we remind you to use the side pathway and **NOT** to walk across the carpark when bringing and collecting children (including Early Drop Off time).

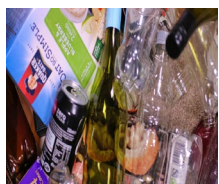


Wanted – Please can we have any spare children's pants, socks, tights, trousers and leggings you may have, that we can use to change children into when they have had an accident or have been wet. Also, please can you return any nursery clothes you may have from us when your child has been changed, our supplies are running very low.



School Fund – Thank you to all who pay their weekly £2.00 school fund money. We rely on this school fund donation to buy children their daily snacks and use it towards the purchase of treats, to buy resources and equipment for all children to use.

Please can we ask everyone to try and contribute to the school fund. Money can be paid weekly, fortnightly, monthly, half termly, termly or for a full year. Please place it in a packet or envelope with your child's name on and drop it in the bucket at the front door. Thank you



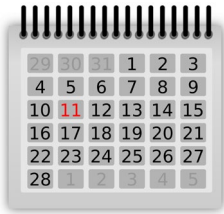
Recyclable Materials – As part of the work we do on recycling materials we will be having our collection boxes at the front of school (for you to help fill) for 2 weeks starting 26th January.

Please can we have boxes, tubes, yogurt pots, bottles (not milk), bottle tops and cartons placed in the boxes.

Please can you encourage the children to separate and sort them into the designated boxes.

After 2 weeks we will remove the boxes, stop collecting and then bring them back out again in a few weeks when they need filling up again.

Nursery closes for half term holiday on Friday 20th February and reopens on Monday 2nd March 2026



Some dates for your diaries –

Thursday 5th March – World Book Day – Come along and read stories to your child – further details to follow

Week beginning 2nd March – Governor Week

Week beginning 16th March – Spring Craft Week – Come along and join in making some Spring crafts with your child – further details to follow

Thursday 2nd April – School closes for Easter and re-opens Monday 20th April

Tuesday 16th April – School places allocated to parents by email

Kind regards

Mrs Scott

